



GreenState
CREDIT UNION

2023 Giving Report





We Give & Grow



We are proud to share what we were able to accomplish in 2023. While this report is rather long, it's just the highlights. There are hundreds more organizations receiving support from our cooperative, and thousands of volunteer hours donated by our staff to help make their communities stronger. It all begins with you. When members do business with GreenState, our cooperative grows. The more GreenState grows, the more we are able to give back to our members and the communities we serve. It's that simple. On behalf of our volunteer board of directors and staff, thank you. You made it possible when you chose GreenState to be your financial partner.

Vic Israni

Vic Israni • President/CEO • GreenState Credit Union



In 2023, GreenState supported over 700 charitable events and programs.



GreenState staff volunteered over 6,700 hours to support local events and charities.



GreenState contributed over \$3,800,000 to the local community. As we grow, this amount grows too.

GreenState Credit Union Financial Center
North Liberty, Iowa



greenstate.org





DONATION \$5,000

DuPage Habitat for Humanity - Home Dedication Sponsor

A Habitat Home Dedication is a special celebration held at the conclusion of a build, before the family moves in. In addition to the keys presentation, the event often includes a prayer, ribbon-cutting ceremony, home tour, and refreshments. Habitat welcomes everyone in the community to attend the home dedication ceremonies and to share in the homeowners' joy. Our gift of \$5,000 helped cover the cost of ten ceremonies, including event signage, refreshments, decorations, and special gifts for the new homeowners.





Johnson County Affordable Housing Coalition

- Key Sponsor

In the last year, the Coalition has been instrumental in advising local leaders on how best to spend ARPA funding for Johnson County residents. They have also improved access and decreased eviction for low-income renters, decreased barriers to building affordable housing through multiple municipalities, and worked to secure more pathways to homeownership for lower-income households.

DONATION

\$5,000



JOHNSON COUNTY
Affordable Housing Coalition

Affordable Housing



**GIVE &
GROW**

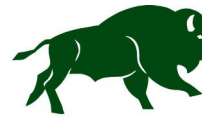
DONATION \$10,000

DuPage Pads - Operating Support

Our funding works to address gaps in satisfying critical needs for clients experiencing homelessness, including food, shelter and wraparound services designed to streamline stability and well-being. The organization's goal is to holistically assist participants in obtaining stable housing, economic stability and improved physical and mental health.

Families and individuals facing a housing crisis are often subjected to a myriad of complex challenges and health concerns. As clients work with DuPage Pads staff to overcome their own unique barriers to housing, general operating funds enable the organization to provide a continuum of resources, personalized case management, education and employment services, and access to healthcare, food, referrals, and housing plans. Last year, as a result of these comprehensive services, DuPage Pads served 1,206 individuals, including 384 children, and assisted 256 clients in obtaining stable housing.





Chicago Zoological Society

Inspiring Conservation Leadership

Chicago Zoological Society - Brookfield Zoo - Living Coast Splash Pad Sponsorship

The Living Coast Splash Pad features a cushiony foundation along with multiple spraying water jets for warm weather fun. The splash pad is open from Memorial Day to Labor Day - weather permitting. Zoo hours are 9:30 a.m. to 6:00 p.m. daily. The average attendance of the zoo is one million visitors annually.

DONATION \$10,000





Cedar Basin Music Festival

The Cedar Basin Music Festival has been a free event to the public since 1976 and continues to feature multiple stage locations from which they are able to provide the most diverse, non-stop musical entertainment. Each of the main stages feature unique amenities and music, designed to broaden the appeal by creating locations that are family-friendly, Main Street business-centric, and education-focused while highlighting the reasons to live, work and play in the Cedar Valley. This festival provides a safe and fun venue to host high school class reunions, family get-togethers, corporate tents for local businesses, and the Cedar Falls Lions Club Pancake Breakfast, all while providing top-notch musical acts throughout the weekend.

PLEDGE \$36,000





Grinnell School of Music - Capital Campaign

PLEDGE \$30,000



The Grinnell School of Music is undertaking a capital campaign in order to build a new space that will accommodate existing and growing demand for their programs, including private lessons, small and large group workshops, after-school and summer programs, and other resources such as rehearsal space for community musicians and music groups.

The Capital Campaign will support:

The lease, purchase, and full reconstruction of a downtown building, featuring:

- A rehabilitated storefront which is pedestrian-friendly, fully accessible, and encourages commercial activity.
- A bright and sunny 800-square-foot classroom for group lessons, workshops, and rehearsals.
- Three acoustically sound rooms for lessons, practice, or recording.
- A bright, safe, one-way alley drop-off area with a beautiful custom mural, outdoor seating, and bike racks.
- Dedicated indoor student and parent waiting areas.

Dubuque County Historical Society

- National Mississippi River Museum - Preserve the Wonder



Preserve the Wonder is a comprehensive campaign aimed to reimagine spaces throughout the museum's campus, increase their endowment, and support aging behind-the-scenes infrastructure projects.

PLEDGE \$25,000





Think Big Corporation - Think Big School of Business

Based in Rockford, Illinois, the Think Big School of Business is a series of free classes aimed at helping entrepreneurs plan, develop, and implement a business. The school of business consists of four weeks focusing on:

- **Week 1** - Formalizing Your Business: Hustle To Legit
- **Week 2** - Business Credit: It Takes Money To Make Money
- **Week 3** - Branding And Marketing: Seeing Is Believing
- **Week 4** - Developing Your Business Plan: Started From The Bottom Now You're Here

DONATION

\$5,000

THINK
big!



City of Cedar Falls, Cedar Falls Tourism

- Panthers on Parade

The City of Cedar Falls and University of Northern Iowa sold 25 mascot statues to area businesses/organizations which will be painted with unique themes and displayed at participant locations. The community, students, and incoming visitors are invited to find, photograph, and share photos of the mascot statues on social media.

DONATION \$5,500



PANTHERS ON PARADE



CEDAR FALLS

Rockton Lions Charity

- Old Settlers Days

This is a national music festival put on by the Rockton Lions Club, benefitting Winnebago County in Illinois. Proceeds of this event are funneled directly back into the community, serving the needs of non-profits and individuals, focusing on sight- and sound-related disabilities.

DONATION \$5,000





Community Foundation of Johnson County

- North Liberty Centennial Park Next Stage Capital Campaign

Centennial Park will be completed in four phases:



PLEDGE \$25,000

Phase 1: The Centennial Center and stage, along with necessary utilities, exterior restrooms, and an expanded plaza space, are in design with an expected opening of summer 2025.



Phase 2: Splash pad and expanded playground with wheelchair-accessible playground units, plus a picnic shelter with additional restrooms, shade structures and expanded parking. This phase could be open by summer 2026.



Phase 3: A year-round pavilion and an expansive plaza space.



Phase 4: An honor garden to recognize Iowa's service men and women around the park's existing pond.





B.WELL Foundation

- King Elementary Tactile Mural and Sensory Wellness Space



B.WELL FOUNDATION

Our support was the catalyst to create a one-of-a-kind tactile mural and sensory wellness space for students of all abilities and neurodivergence within King Elementary School. This school is a Title 1 K-5 school within the Des Moines Public School District and established partner of the B. WELL Foundation.

The B.Well Foundation is dedicated to supporting students in the Des Moines metro community, focusing on underserved and under-represented youth and families. The Foundation supports initiatives that focus on education, mentorship, and families and schools in need of resources. The mission of the Foundation is to develop and expand young minds by building character through mentorship and education. Their desire is to be positive role models, teach respect, and build character, with a vision to build stronger futures for youth and lift them to a place of prosperity.



PLEDGE \$20,000

Give & Grow

- School Match Program



GIVE & GROW

23 school districts across our geographical footprint received \$119,000 from GreenState members and our dollar-for-dollar match.





Linking Families and Communities

- Planting the SEEDS for a Brighter Future

PLEDGE \$30,000



LINKING FAMILIES
AND COMMUNITIES

This project in Fort Dodge, Iowa, remodels an existing building into a child care center that will have a capacity of 103 child care spaces. The project provides: expanded hours to accommodate parents that work a 12-hour day-shift; high quality child care; on-site preschool; transportation for school age children; and higher wages in order to recruit and retain child care staff. The goal is to increase the number of child care spaces in the Fort Dodge community, which will allow more parents/guardians to go to work, ensuring quality early care and education for children.



Willkie House

- Willkie House Gym Renovation

DONATION \$10,000

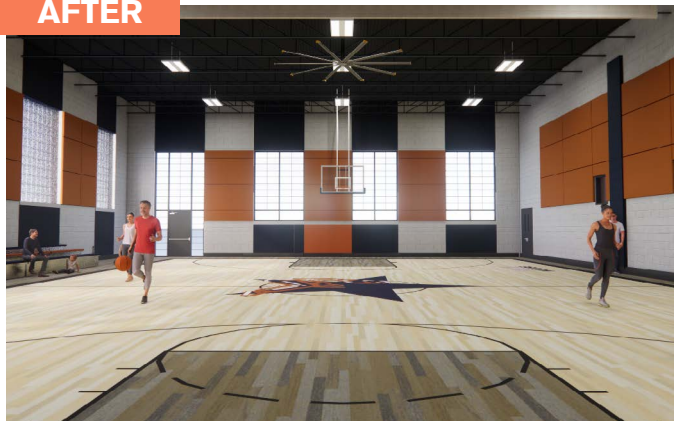
The Willkie House is a historically Black non-profit community center that has been serving the Des Moines community since 1917. They offer after-school and summer programming to elementary and middle school age children. 92% of their participants are youth of color, 75% come from single parent households, and 49% live below the federal poverty line.

Much of their programming takes place in a 72-year-old gym, which is badly in need of repair. Phase 1 of their capital campaign will fund a full gym renovation, including a new floor, windows, wall mats, basketball hoops, and more. Many of these needs are critical and safety related. The renovation will not only allow them to better and more safely serve the youth, but it will enable them to expand partnerships and bring more youth programming into the facility.

BEFORE



AFTER





DONATION \$25,000

Big Grove Brewery/Iowa Natural Heritage Foundation - A Greener State of Mind

2023 marked our 3rd installment of A Greener State of Mind pale ale, which is produced by our partner Big Grove Brewery. 100% of the proceeds were directed to the Iowa Natural Heritage Foundation. Their mission is to connect Iowans to our diverse landscape and value our healthy land, water and wildlife. INHF's goal is to protect our home so others can love it for generations to come.



**Iowa
Natural Heritage
Foundation**

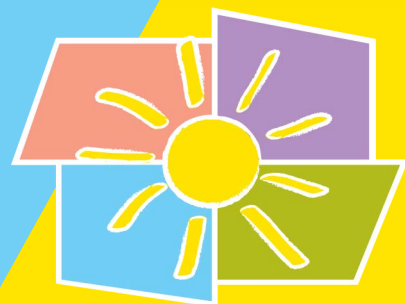




Children's Cancer Connection - Teen Camps

Children's Cancer Connection's (CCC) mission is to provide campers affected by childhood cancer, and their families, a secure environment to connect, grow and create lifelong memories. CCC camps include Oncology, Sibling, Teen, Family and Day Camps. These camps allow kids who have or had cancer, and their siblings, to connect with peers who can relate to their journey while enjoying fun activities and traditions.

Children's Cancer Connection supports families through the entire journey, regardless of treatment outcome. By partnering with them, we help ensure that camps stay completely free for families.



Children's Cancer
CONNECTION[®]

DONATION \$10,000



Dental Connections, Inc. - Smile Squad Mobile Dental Unit

The Smile Squad Mobile Dental Clinic is a community-based dentistry program that eliminates transportation barriers by delivering dental care through two mobile dental units. The units visit 58 schools each year, 16 Head Start pre-schools, along with youth shelters, the Iowa Horseman's Benevolent & Protective Association, and the Des Moines Homeless Veterans Stand Down.

The Smile Squad units consist of two recreational vehicles (RV's) retrofitted with two dental chairs, x-ray units, and a sterilization center. A dentist and two dental assistants staff the units to provide comprehensive general dentistry exams, cleanings, x-rays, fluoride, sealants, fillings, stainless steel crowns, and extractions.

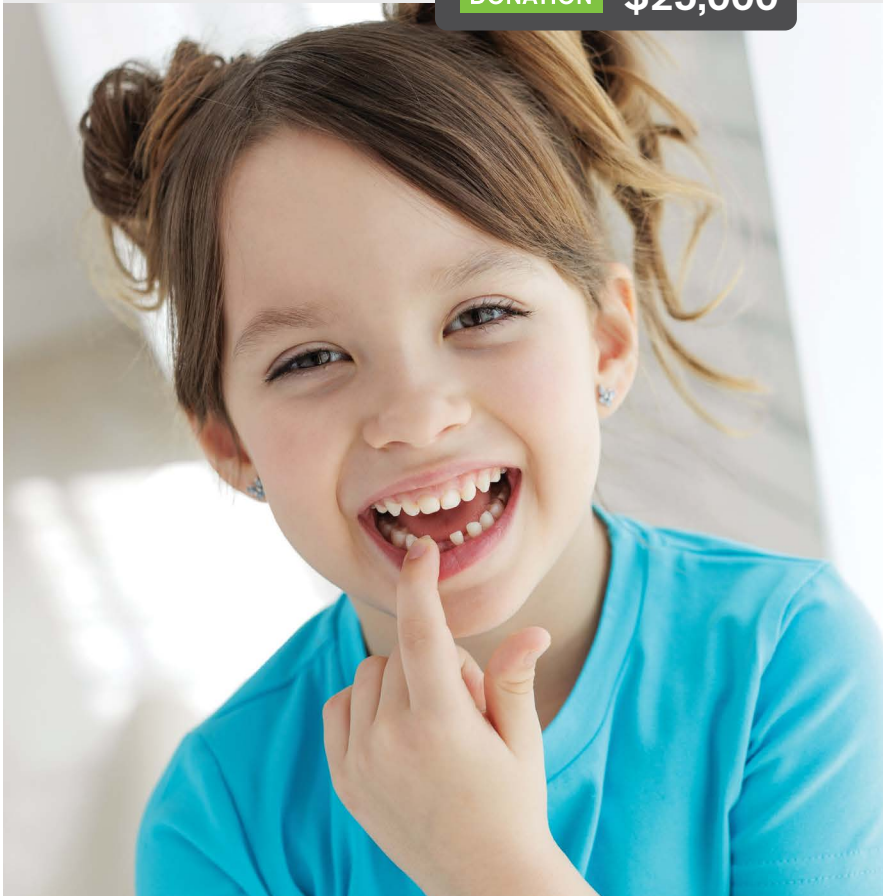
DONATION \$25,000



Building a community of smiles.



Our funding allowed Dental Connections, Inc. to purchase a new unit, retire the old one, and use two mobiles simultaneously. This allows for expansion of the Smile Squad program.





DONATION \$5,000

Mutual Ground - Corporate Partnership

As a corporate partner, GreenState is helping Mutual Grounds mission to empower individuals, families, and communities across DuPage County, Illinois, to eliminate domestic and sexual violence and the harms of substance use through education, awareness and life-changing services.

MUTUAL GROUND





Growing Stronger Together



The GreenState Foundation has been hard at work finding opportunities to improve the qualities of life in the communities we serve, and to help augment the credit union's community investment goals. As a member-based Foundation, our mission is to provide our members and communities with solutions to improve financial health, address housing needs, and sustain our environment. We are excited to state that our largest investments last year came in the form of down-payment assistance grants, which totaled \$707,500. This is instrumental in helping homeownership become more accessible.

We would like to showcase some of the grants we awarded this past year. Additionally, I want to thank the GreenState Foundation Board of Directors for their time, effort, and expertise.

Tara Wachendorf

Tara Wachendorf • President • GreenState Foundation

Community Investment Statement

In 2021, GreenState Credit Union announced a \$20 million dollar investment in our communities over the next ten years. Three years into this endeavor, we have the latest figures shown below.

Targeted Investments & Contributions Progress

*Investments made since January 2021

\$644,541

Affordable Housing

\$4,824,623

Financial Health

\$1,013,990

Environmental Sustainability

GOAL \$6,000,000

GOAL \$9,000,000

GOAL \$5,000,000

Bridge Communities, Inc.

- Transitional Housing Program

Our grant will provide two years of intensive life-skills mentoring, safe housing, holistic supportive services, and financial coaching to the Bridge community. This community consists of adults with dependent children that are currently homeless or at risk of becoming homeless and live and work in DuPage County. These families have become homeless due to divorce, domestic abuse, loss of employment, and unaffordable health care costs. Over 90% of Bridge clients are headed by single mothers, approximately 55% of whom are survivors of domestic violence. 87% of their client families identify as BIPOC (Black, Indigenous, and People of Color) who have been disproportionately impacted by systemic oppression, generational poverty, disparities in healthcare and education, and the COVID-19 pandemic.



GRANT \$10,000

Ellipsis Inc.

- Group Foster Care

GRANT \$15,000



Ellipsis envisions a community where kids and families are valued, hopeful, healthy, and together. They provide outreach for and access to mental and behavioral healthcare in the community and residentially, regardless of ability to pay. Their services include youth emergency shelter, short-term respite, group foster care, foster care transition services, counseling and therapy, behavioral health intervention services, and integrated home health. Each day, Ellipsis serves more than 500 youth, nearly all of whom come from an underrepresented or marginalized community.

With our support, Ellipsis is expanding its umbrella of care to fill identified community gaps, including girls' Qualified Residential Treatment Programming (QRTP, often called group foster care). QRTP offers residential treatment to system-involved youth who cannot safely remain in the community. It is a comprehensive intervention specifically targeted to the needs of adjudicated youth.



Humility Homes & Services

- A Home for Every Person

PLEDGE \$50,000



humility
HOMES & SERVICES

Humility Homes and Services, INC (HHSI) has initiated a capital campaign to strengthen the many supportive housing programs, emergency shelter options, and overall capacity of the agency. This campaign solidifies the stability and viability of the organization, ensuring continued person-centered housing services for those most in need in the Quad Cities community.

Along with establishing additional housing units, HHSI will be increasing agency capacity to allow for consistent, evidence-based practices that connect people to permanent housing. As a result of the campaign, Humility Homes will have the ability to impact nearly 900 individuals and families annually through their programs, ensuring that 20% of HHSI-owned properties are accessible for those with physical disabilities.



Dalla Terra Ranch Foundation

- Farming & Ranching for Historically Underserved Producers

GRANT

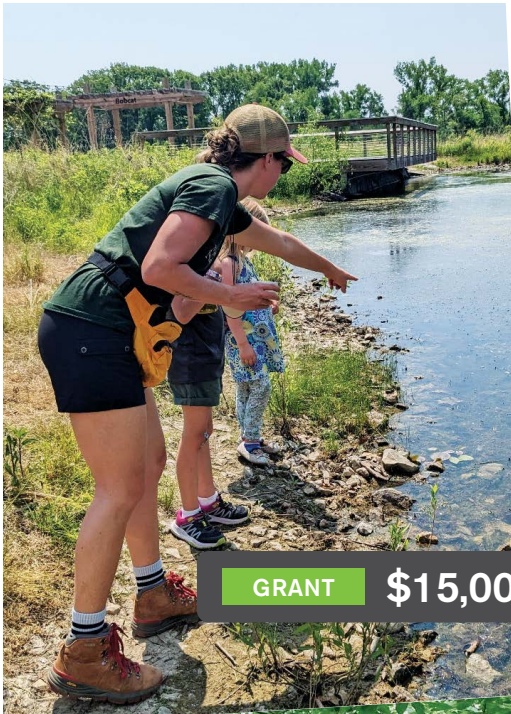
\$15,000

This grant supports the New Farmer Program, which provides land access, technical assistance, and business development support to historically underserved producers on six small farms ranging from one to five acres. These new farmers, all originally from Burundi, harvest thousands of pounds of fresh produce to feed their families and communities while building a livelihood. The farmers plant a combination of African and American crops, working the fields with their families and adopting sustainable practices at the forefront of climate-smart agriculture.

In Harmony Farm has identified critical projects that will prepare the existing farms for increased efficiency, and support the expansion of new farms. Required farm improvements include:

- 1 Graveling of dirt transportation paths that can be impassable in early spring and/or after heavy rain.
- 2 Purchase of a utility wagon to improve efficiency as farmers move their harvest to coolers and to provide transportation for guests with mobility challenges.
- 3 Installing water access to a new section of the farm.
- 4 Installing a livestock handling system to launch the New Farmer Program.





GRANT \$15,000

Indian Creek Nature Center - Prairie and Woodland Restoration

Indian Creek Nature Center (ICNC) plans restoration and conservation efforts on a portion of its woodlands and prairie. These efforts include invasive species removal on eight acres and controlled burns on 30 acres to restore the health of the land and create effective water filtration at the confluence of Indian Creek and the Cedar River in Linn County, Iowa. This ecological work and investment enhances the biodiversity of the site, creates spaces for visitors to connect with the natural world and grow land stewardship, and supports green industry jobs. Our funds provide the necessary equipment and labor to carry out the work that is done by the land team, contractors, and volunteers.



Nahant Marsh Education Center

- Land Expansion and Restoration

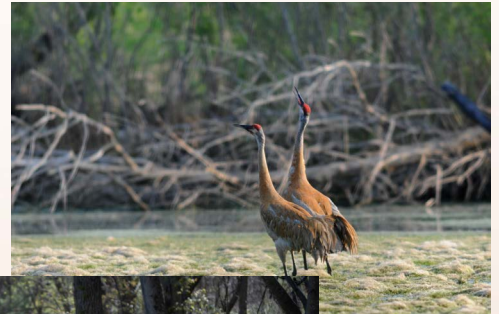
PLEDGE \$50,000



NAHANT MARSH EDUCATION CENTER

In recent years, Nahant Marsh Education Center has formed a unique partnership with the River Bend Food Bank and the Iowa Natural Heritage Foundation to acquire a 70-acre parcel located between Nahant Marsh and River Bend Food Bank. This parcel is critical to the long-term survival of the marsh ecosystems, the ability to expand trails, and the ability to provide new recreational and educational opportunities for the public. It is critical for the River Bend Food Bank, which is currently land-locked, to be able to expand to meet its mission of ending hunger in the Quad Cities area as it will allow them to expand their building and parking area. This also meets the Iowa Natural Heritage Foundation's mission of protecting sensitive habitat in Iowa.

They plan to restore the farmland back to wetlands and prairie. This will help to prevent run-off from neighboring industrial and agricultural areas, provide additional flood storage, and provide new habitat. Additionally, trails will be constructed that will allow Nahant to connect neighborhoods in southwest Davenport to the education center, to the food bank, and to nearby national trail systems.



Convivium Urban Farmstead
- Neighborhood Garden Support

GRANT \$18,000



Convivium, based in Dubuque, Iowa, believes that the food we eat, how it is grown and prepared, and who we enjoy it with contributes to healthy, fulfilled lives. For them, this starts in their neighborhood gardens – which are both educational and functional. They provide hands-on learning opportunities for volunteers and class participants, as well as yield a significant amount of produce that is used in their restaurant, cooking classes, and free casserole program. Their team also maintains raised bed gardens, called Common Beds, where they grow food for the community – anyone can harvest from them!

Each year, Convivium’s gardens expand and the amount of space they dedicate to grow produce for the free casserole program increases. They currently distribute 250 meals each week to local families in need of food assistance.



Grinnell Farm-To-Table: Your Local Food Connection
- Increased Cold Storage Capacity

GRANT \$15,000

Local Foods Connection’s mission is to provide equitable access to locally and sustainably produced food to Poweshiek County residents to create a more vibrant local food system. Their food access program uses support from the USDA and other community foundation grant programs to purchase food from local farmers and provide it to individuals below the ALICE (Asset-Limited-Income-Constrained-Employed) threshold. Weekly food deliveries of meat, dairy, eggs, and produce are made to families in the Grinnell area and food pantries in Poweshiek County. Local Foods Connection also operates a fully-functional online farmers market, Grinnell Farm-To-Table, for farmers to list and sell products to the general public. Beyond food access and retail programs, they have also begun selling local meat, dairy, and vegetables to larger institutions, including the Grinnell-Newburg School District.





Elmhurst Yorkfield Food Pantry - Mobile Food Pantry Program

GRANT \$15,000

The purpose of this program is to bring food to the underserved Hispanic community on the border of Elmhurst, Illinois. Many of these families have limited access to transportation to shop at the pantry in southern Elmhurst. The pantry provides milk, eggs, fresh produce, and fruits, as well as culturally accepted food for this community. This grant funded eight mobile pantries.



Genesis Health Services Foundation - FoodPlex Pilot

GRANT \$25,000



In this pilot, food patients are screened for food insecurity and uncontrolled diabetes during visits to a primary care office, convenient care, or the Emergency Room. If they have both conditions, they are referred to the FoodPlex where they will receive a one-on-one consultation with a dietitian or dietary technician to discuss their needs and their knowledge of and ability to prepare healthy foods. Once enrolled, they receive a customized food plan, and education about how to prepare healthy foods. They receive a week's worth of free, healthy food for themselves and up to three other family members. Patients get scheduled for weekly follow-up visits to the FoodPlex where they continue to receive a week's worth of healthy foods. Clinical metrics, like A1C level or blood sugar, are periodically measured. If patients are struggling to utilize their food or their quality of life is not steadily improving, changes are made to their food plan and referrals are made to the Genesis Transitions of Care team or community resources. Patients are informed of their progress against the plan and their personal goals, and those who are non-compliant (e.g. throwing away food, missing appointments) are encouraged to adhere to the program for their own health or else be unenrolled from the program. Success will be measured through improved clinical outcomes. For patients not steadily realizing clinical improvements, some success will also be measured through their case management to understand improvements in their quality of life. Volunteers will help facilitate visits to the FoodPlex by assisting patients with their food selections, and stocking and cleaning shelves.

Homes of Oakridge Human Services - Workforce & Financial Pathways to Success

Oakridge is Iowa's largest Section 8 housing project, and for 54 years has created opportunities for children and families to succeed and prosper. Oakridge is a hub for immigrants and refugees, serving residents and clients who hail from 22 countries and collectively speak 21 languages. Oakridge is also a very inclusive operation, as all programs are open to both residents and the greater community.

The comprehensive Family and Workforce Program serves as the backbone of operations, providing services for all departments in the organization. The program focuses on career services and job placement; family engagement and professional development; asset building and financial training; plus, provides English language instruction, citizenship classes, and driver's education.

The Family & Workforce Programs help address the barriers impacting low income and refugee families and their ability to build prosperity. By improving clients' financial literacy, their programs provide clients with the tools they need to lead a better quality of life by reducing financial stress and promoting financial well-being. Research shows people who experience improvements in financial well-being also experience improvements in mental health outcomes.

GRANT \$20,000



OAKRIDGE
NEIGHBORHOOD





Iowa Legal Aid

- Legal Services to Increase Financial Health

Too many Iowans struggle to meet their basic daily needs: safe and stable housing, basic income, affordable healthcare, food, and freedom from physical and financial abuse. More than 416,000 Iowans are estimated to live at or below 125% of the Federal Poverty Level and are eligible to receive legal services from Iowa Legal Aid. Unlike criminal cases, there is no court-appointed attorney for clients who cannot afford to pay. People with low incomes cannot afford to hire an attorney for the legal advice and representation needed in civil matters that can help meet their needs and provide stability. Iowa Legal Aid services are one of the most effective means of achieving a favorable outcome.

GRANT \$20,000

Neighborhood Centers of Johnson County

- NCJC Expansion Project Fund



NEIGHBORHOOD CENTERS
of Johnson County

Our dollars will help to expand Neighborhood Center's reach to neighbors in need by building a new community center in a neighborhood not currently served. Established in 1973, NCJC offers neighborhood and school-based services and activities for children and families in four main areas: Family Support, Early Childhood Education, Community Engagement, and Youth Development programs.

PLEDGE \$75,000

The Center's goals of expanding into a new neighborhood in need are to (a) create more opportunities for families who receive childcare assistance from the Iowa Department of Human Services (DHS), (b) build capacity for their high-quality middle and high school programming, (c) expand existing relationship with the Iowa City Public Library to provide a third satellite children's library, (d) create learning opportunities for youth and adults by using a new computer/tech lab, (e) create more private space for staff and community partners to render services with discretion, and (f) expand opportunities for joint programming/events with community partners.



Forest Ave Outreach

- Pathway to Building Trades

Pathways to Building Trades is an Earn-While-You-Learn opportunity for 16-19 year olds to explore a career in the Building Trades. For ten weeks in the summer, participants experience hands-on work through Union training center tours and at Habitat for Humanity projects. Through a partnership with Central Iowa Building Trades, the program utilizes the Multi-Craft Core Curriculum (MC3), a 120 hour course designed to expose youth to building trades and teach them the skills necessary to apply for a Registered Apprenticeship. They will receive OSHA 10, First Aid/ CPR training and will graduate with an industry-recognized credential and certificate. This program aims to bridge young, diverse applicants to the Skilled Trades industry to give them access to good-paying jobs, healthcare, and retirement. An important aspect of this organization is that they break down barriers by providing transportation, food, and work gear.

GRANT \$10,000

FOREST AVE
OUTREACH



Refugee and Immigrant Voices In Action (RIVA)

- RISE AmeriCorps

RISE AmeriCorps, one of RIVA's key programs, leverages the power of community by training emerging immigrant leaders to connect and support fellow immigrants with educational and economic opportunities. RISE AmeriCorps is designed to bridge the gap between Iowa employers facing a chronic workforce shortage, and immigrant/refugee communities who seek career skills and cultural understanding to build their own future in the state economy.

RISE AmeriCorps members support these individuals as they improve their English or digital skills, participate in financial literacy and job training workshops, and/or complete their higher education, among other service categories. At the end of their service year, each individual will have served hundreds of their community members, gained job experience themselves, and developed a sustainable model for societal change through servant leadership.



Refugee & Immigrant
Voices In Action

GRANT

\$10,000









GreenState Credit Union
2023 Giving Report