



GreenState

CREDIT UNION

2024 Giving Report





We Give & Grow



We are proud to share what we were able to accomplish in 2024. While this report is rather long, it's just the highlights. There are hundreds more organizations receiving support from our cooperative, and thousands of volunteer hours donated by our staff to help make their communities stronger. It all begins with you. When members do business with GreenState, our cooperative grows. On behalf of our board of directors and staff, thank you. You made it possible when you chose GreenState to be your financial partner.

Vic Israni

Vic Israni • President/CEO • GreenState Credit Union



In 2024, GreenState supported over 620 charitable events and programs.



GreenState staff volunteered over 7,500 hours to support local events and charities.



GreenState contributed \$3,900,000 to the local community.





Think Iowa City - Herky on Parade 3

GreenState was presenting sponsor of the 3rd release of Herky on Parade, a community favorite, where 101 statues of Herky the Hawkeye are displayed around Johnson County. Each statue is hand-painted or designed by local artists, bringing a unique flair for families to view and photograph. At the end of the summer, the statues were auctioned off, netting \$95,500, which was given back to three local school districts.





Morton Arboretum - Fall Color Festival

The Fall Color Festival celebrates the most brilliant season at the Morton Arboretum as more than 150,000 visitors take in the 1,700 acres of seasonal splendor when hundreds of thousands of trees show off their fiery orange, warm gold and vivid crimson leaves. This month-long festival in October invites guests to hike or bike in the crisp fall air, drive scenic roads to see spectacular vistas, and create autumnal family memories. Our funding also supports the Fall Color 5K Run and Walk, where families and runners alike follow a scenic, rolling course through the Arboretum's East Side. Guests also enjoy marvelous, one-of-a-kind glass creations during the annual Glass Pumpkin Patch weekend.



Iowa Basketball Holdings

- Iowa Wolves Partnership

In this new and exciting partnership, GreenState made a donation to Junior Achievement of Central Iowa for every home game dunk made by an Iowa Wolves player. Junior Achievement is a charity that empowers youth through programming focused on work readiness, entrepreneurship, and financial literacy. They connect businesses and schools to deliver relevant educational experiences.

We were proud to see over 100 dunks occur during home games this season!

DOLLARS FOR DUNKS



Junior Achievement™



College Scholarships & School Match

- We contributed \$18,000 of college scholarships to high school seniors.
- GreenState and our members directed \$109,252 back to 21 local school foundations in our geographic footprint.





Junior Achievement of Eastern Iowa - 3DE Founding Partner

We were proud to bring this transformational learning to life here in Iowa. 3DE re-engineers high school education to be more relevant, experiential, and authentically-connected to the complexities of the real world in order to be more fully prepared for the demands of tomorrow's economy.

3DE transforms learning by:

- 1 - Connecting education to real-world concepts to heighten students' appreciation for academics and long-term aspirations.
- 2 - Infusing business connectivity into all aspects of learning to deepen students' understanding and sustain engagement.
- 3 - Delivering opportunities to apply academic concepts to enhance students' retention of knowledge and develop skills for success.





Orchestra Iowa, Inc. - Education Programs

Our funding helped Orchestra Iowa to deliver multiple educational programs to local students of all ages. Each program provides age-appropriate education with a unique focus and purpose. Their STEAM education program uses the arts to help students explore STEAM principles.

Each year, Orchestra Iowa seeks to use its community connections to further expand access through specialized programs deployed to underserved populations. With our help, they were able to bring world-class talent and high-quality music education to the libraries and elementary schools in two towns with large Hispanic student populations. This specialized programming was intended to supplement social studies and music curricula by inspiring students to think about how music can reflect the immigrant experience, which is close to home for many students in their target areas.





LINKING FAMILIES AND COMMUNITIES

Linking Families and Communities

- Planting the SEEDS for a Brighter Future

This project, in our Fort Dodge market, remodels an existing building into a child care center that will have a capacity of 103 child care spaces. The project provides: expanded hours to accommodate parents that work a 12-hour day-shift; high quality child care; on-site preschool; transportation for school age children; and higher wages in order to recruit and retain child care staff. The goal is to increase the number of child care spaces in the Fort Dodge community, which will allow more parents/guardians to go to work and be productive and ensure quality early care and education for children.





Benedictine University

Benedictine University

- Equine and Canine Community Therapy Pre-Certification

Research has shown that equine and canine therapy programs can benefit a wide range of people as they spend time in nature and in the presence of properly trained animals. To this regard, Benedictine University partnered with Main Trail Stables/Hope Through Horses to establish a sensory space on their Lisle, Illinois campus. This space is meant to expose students, faculty, staff, and the immediate community to the benefits of interacting with horses. In the first nine months, nearly 600 people have visited the horse pen and, due to their success, they are expanding programming for the upcoming year.





Wings2Water - Water Warriors

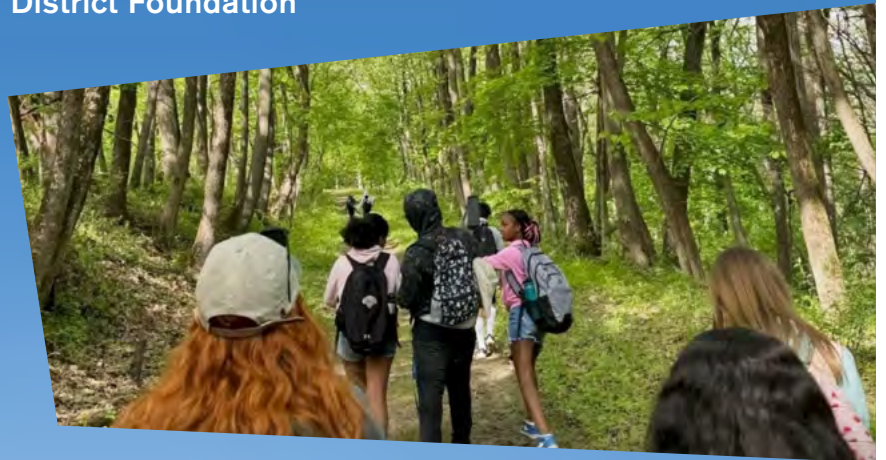
Everyone needs clean drinking water, and this new and unique partnership highlights impactful water quality conservationists in Iowa. These warriors could revolve around farming practices, conservation initiatives, or individuals making a difference in water quality education. The Eastern Iowa Airport is also a partner on this initiative, and promotes it throughout their terminals to the one million people who choose to FLYCID.



Iowa City Community School District Foundation

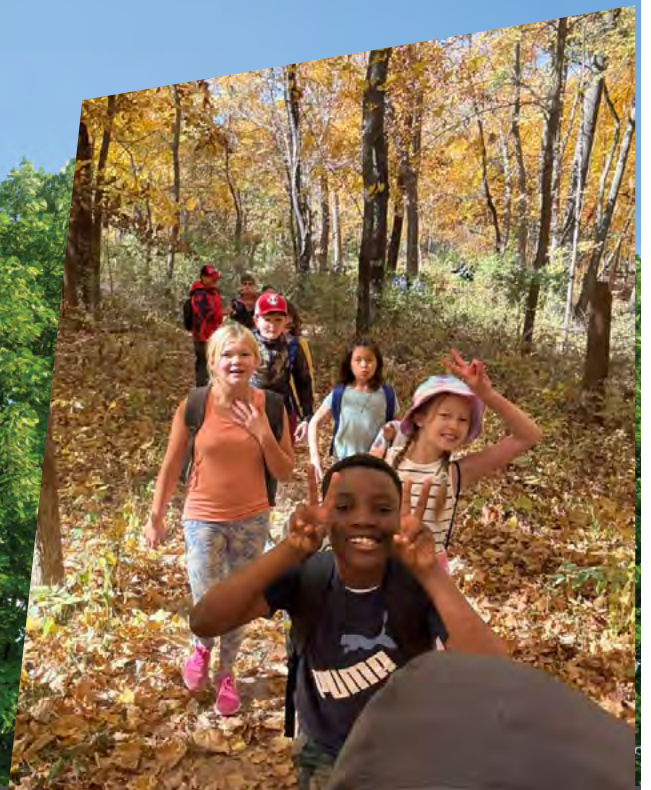
- School of the Wild

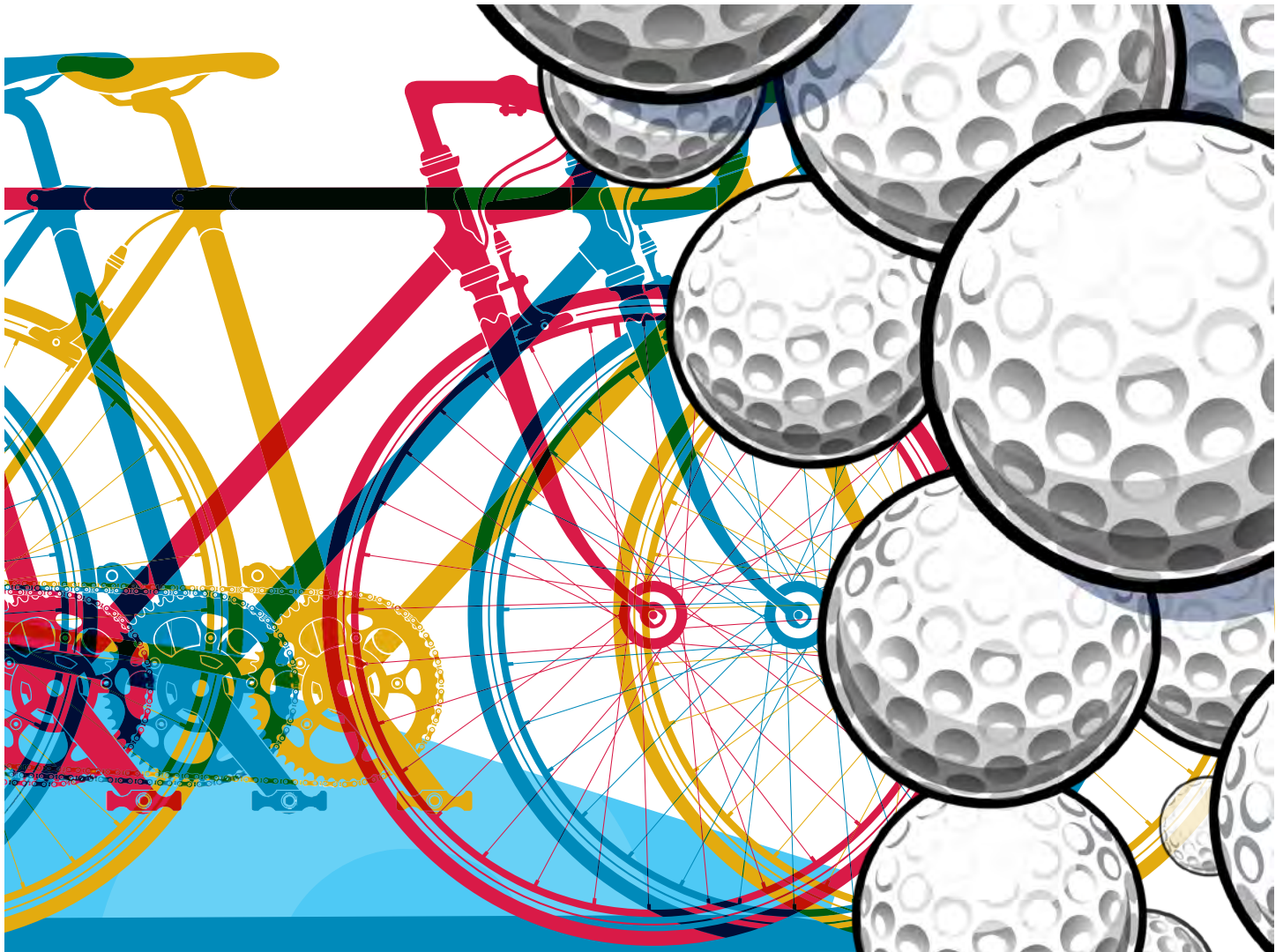
School of the Wild is an immersive outside-the-classroom week of outdoor learning. Every single 5th grader across the 21 elementary schools that make up the district get to enjoy this experience. The nearly 1,100 students who participate are treated to a true summer camp-like adventure tagging and releasing birds, studying the wetlands and woodlands, learning about prairie sustainability, and much more.



The program is designed to foster environmental awareness, teamwork, and personal growth through hands-on activities in nature. The goal is to inspire a love for nature, cultivate a sense of responsibility towards the environment, and enhance students' overall education by connecting classroom concepts to real-world experiences in the great outdoors. Located at Macbride Nature Recreation Area, the program is put on through a collaboration with the University of Iowa College of Education, with support from ICCSD classroom teachers and school staff.

FOUNDATION
Iowa City COMMUNITY School District





Principal Charity Classic

- Pedal to the PCC

This new partnership reduces carbon footprint by encouraging the community to stay active and participate in a beautiful ride from Downtown Des Moines to the Wakonda Club, where the Principal Charity Classic is held. Recipients valet park their bikes and receive free coupons from Big Grove Brewery as a thank you to being environmentally conscious.

This is one of many initiatives the tournament takes to preserve the environment.





Dubuque Community YMCA

- *You Can Be Great Here*
- Capital Campaign

The Dubuque Community Y serves over 15,000 individuals annually, and has had a need to grow their programming and capacity, as the current structure was created in the 1970s. This facility will have year-round childcare, a crisis services shelter, aquatics, recreation camps, exercise classes, mentoring opportunities, youth sports, and chronic disease prevention programs. Leaders in the community view this as a way to pay it forward to future generations.

YMCA



Grinnell Regional Medical Center Foundation

- *Delivering Our Future* Capital Campaign

This campaign raised funds to expand and renovate Grinnell Regional Medical Center's obstetrics (OB) unit in the hospital. The expansion consists of adding a fourth labor, delivery, recovery, and postpartum (LDRP) room which will allow the Medical Center to serve up to 350 moms and babies close to home thus minimizing the risk that comes with a longer drive to another delivering hospital. The renovation of the unit includes right-sizing all patient rooms to allow more space for teams to work, especially when reacting to acute and unexpected medical needs of patients. The renovation will also improve the comfort for their patients, such as the addition of a private patient bathing space within each room, which is not available in patient rooms currently.

Human Services



Malcolm Eaton Enterprises - Community Integrated Living Arrangement (CILA)

Our funding helped this organization replace the roof on a newly acquired residential Community Integrated Living Arrangement home. CILA's are residential facilities that provide 24-hour supervision and support for adults with developmental disabilities. The home is currently being renovated and expected to open in summer 2025.





North Liberty Community Pantry - Planting New Roots



North Liberty Community Pantry

Planting New Roots is the North Liberty Community Pantry's response to the growing need for food and clothing from our neighbors. The Planting New Roots campaign helps them build a larger facility to better serve the community today and into the future. The campaign will allow the pantry to increase their service capacity, engage families in more ways that enhance their available support, and move closer to the neighbors they serve in North Liberty.









GreenState Credit Union
2024 Giving Report